



Department of Education and  
Early Childhood Development

# Mill Park Primary School (5160) - Mill Park Primary School

---

## 2013 Parent Opinion Survey Report

Where provided, hand-written comments from parents in the Comments Report are also available from the School Performance Reports webpage (principal's edumail login and password required)

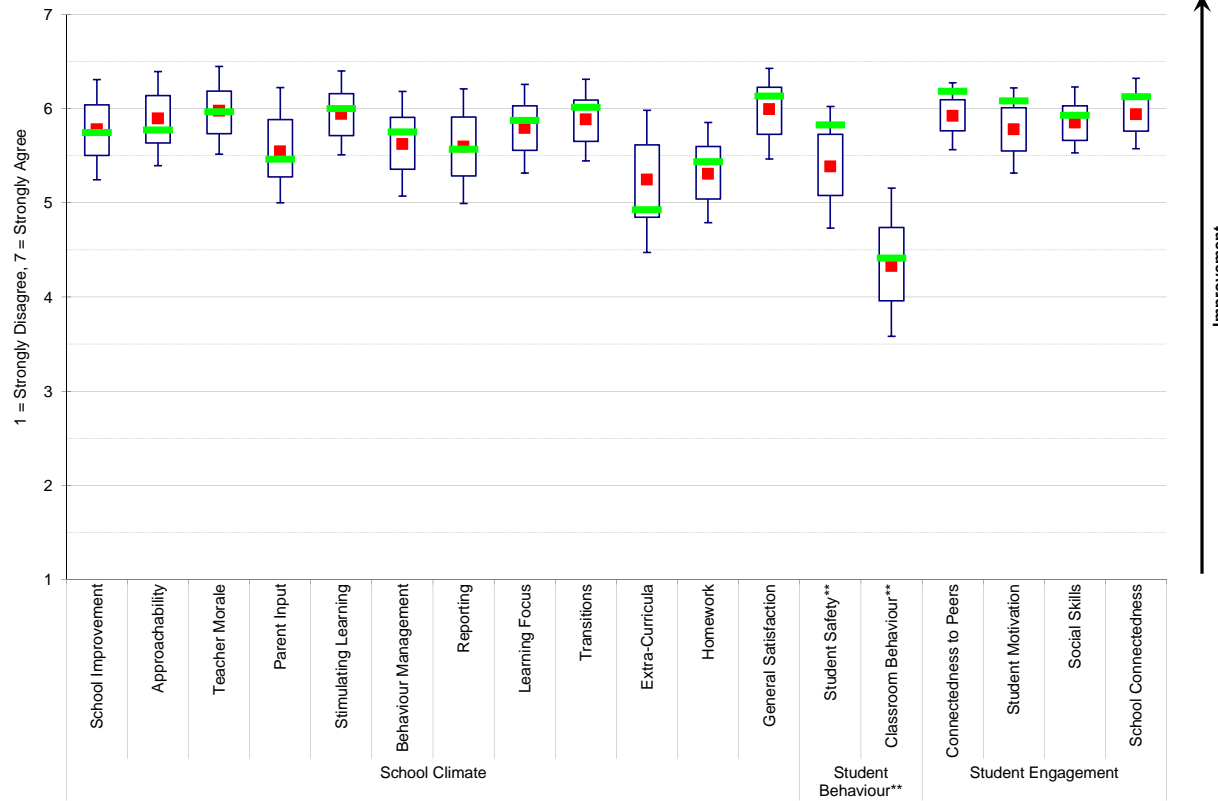
**2013 Parent Opinion Survey**

School Number: 5160

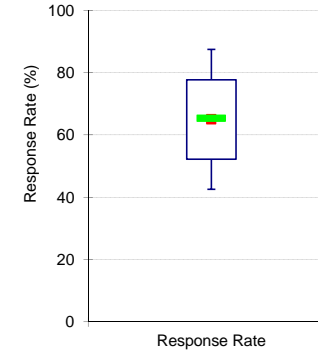
School Name: Mill Park Primary School

2013 Data against Primary School benchmarks

**School means plotted against distribution of Primary School means**



**School response rate against Primary School distribution**



Recommended sample size: 71

Number of questionnaires sent\*: 78

Number of questionnaires returned: 51

Response Rate: 65%

**Legend:**

- 90th Percentile
- School
- 75th Percentile
- Median
- 25th Percentile
- 10th Percentile

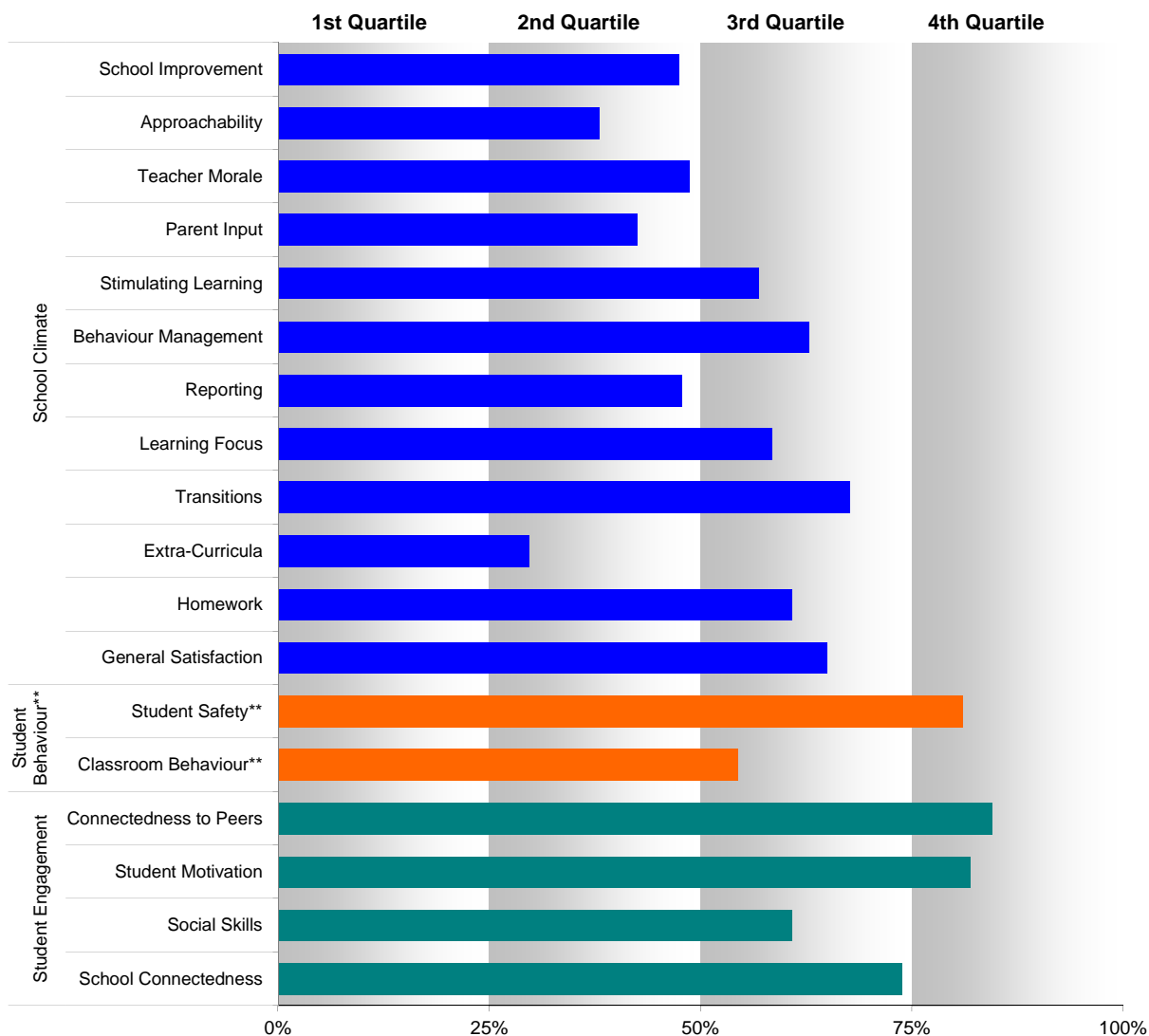
\* The "Number of questionnaires sent" is taken from the tally sheet returned with each school's questionnaires. If the tally sheet was not completed, the number is not available.

\*\* Parents' responses to all negatively phrased questions have been reversed for reporting purposes. Across all variables, the higher the score or percentile rank, the more positive parents' perceptions.

School Number: 5160

School Name: Mill Park Primary School

School means plotted as percentage ranks against Primary School means



\*\* Parents' responses to all negatively phrased questions have been reversed for reporting purposes. Across all variables, the higher the score or percentile rank, the more positive parents' perceptions.

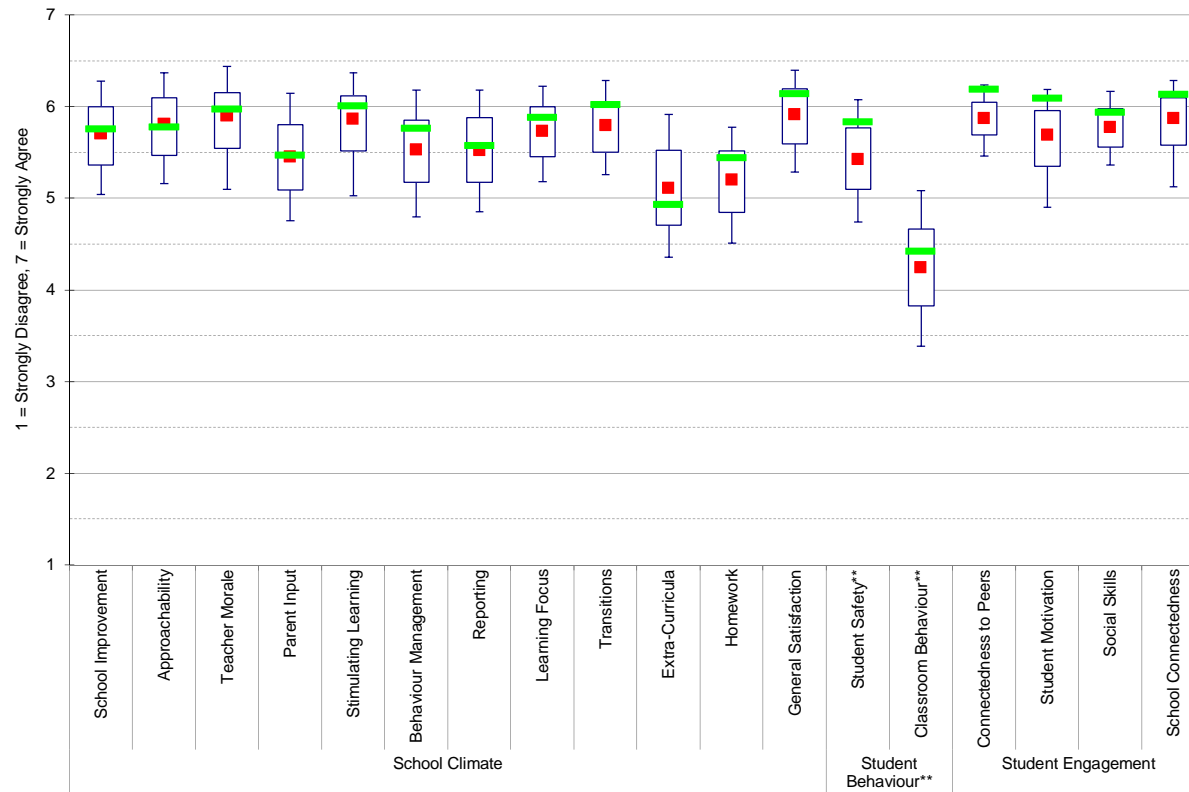
**2013 Parent Opinion Survey**

School Number: 5160

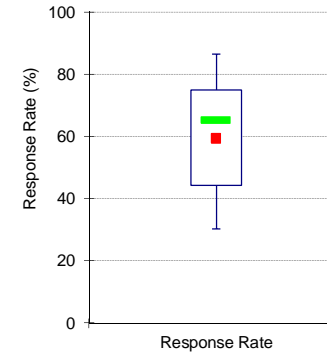
School Name: Mill Park Primary School

2013 Data against state-wide school benchmarks

**School means plotted against distribution of state-wide school means**

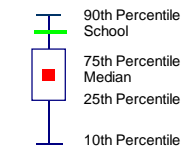


**School response rate against state-wide school distribution**



Recommended sample size: 71  
 Number of questionnaires sent\*: 78  
 Number of questionnaires returned: 51  
 Response Rate: 65%

**Legend:**



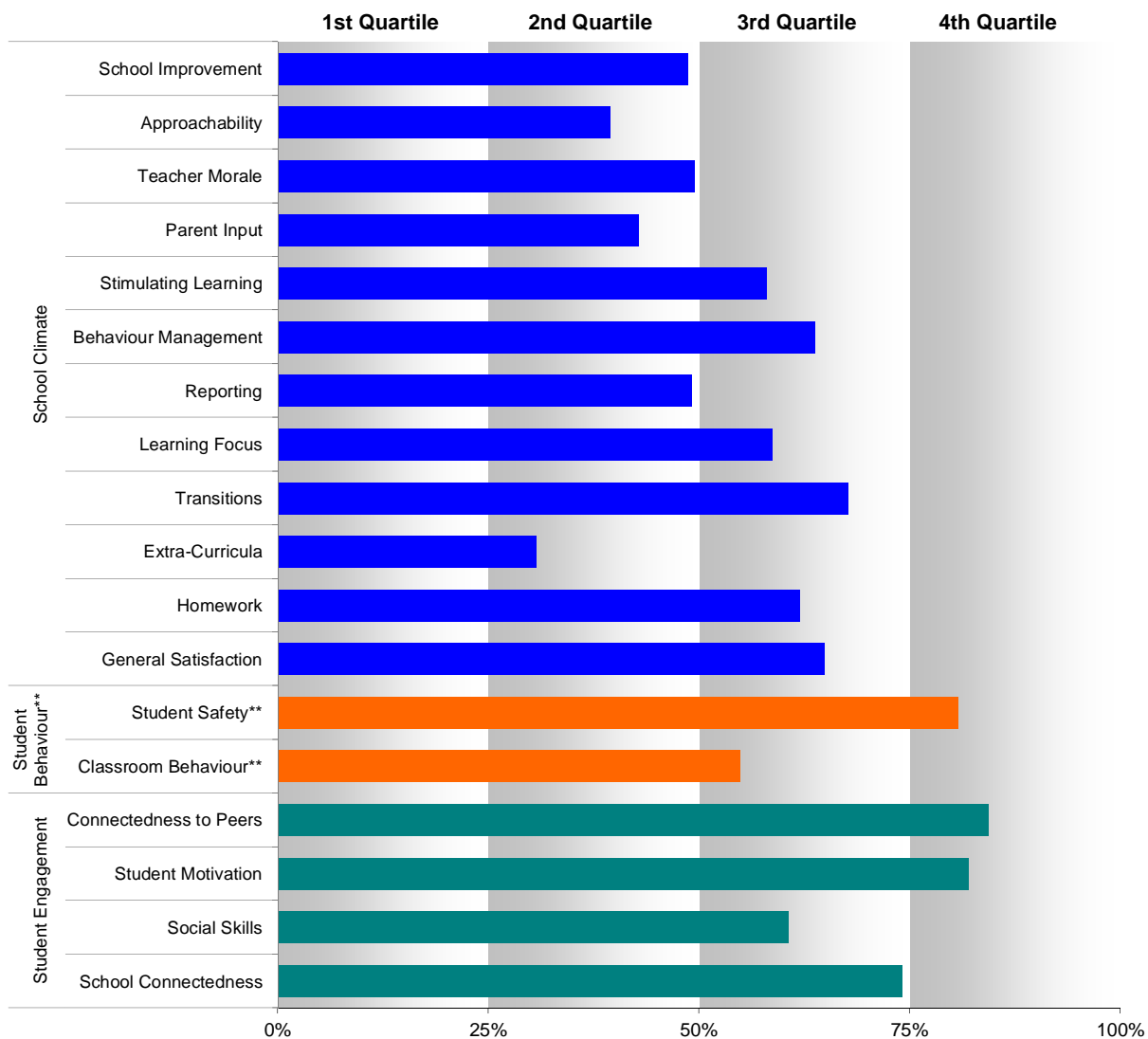
\* The "Number of questionnaires sent" is taken from the tally sheet returned with each school's questionnaires. If the tally sheet was not completed, the number is not available.

\*\* Parents' responses to all negatively phrased questions have been reversed for reporting purposes. Across all variables, the higher the score or percentile rank, the more positive parents' perceptions.

School Number: 5160

School Name: Mill Park Primary School

School means plotted as percentage ranks against state-wide school means

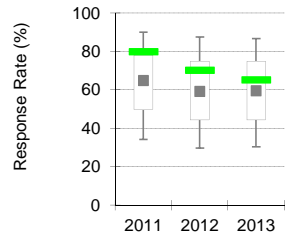


\*\* Parents' responses to all negatively phrased questions have been reversed for reporting purposes. Across all variables, the higher the score or percentile rank, the more positive parents' perceptions.

School Number: 5160

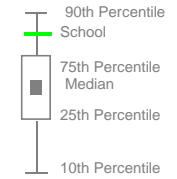
School Name: Mill Park Primary School

School response rate plotted against state-wide school distribution

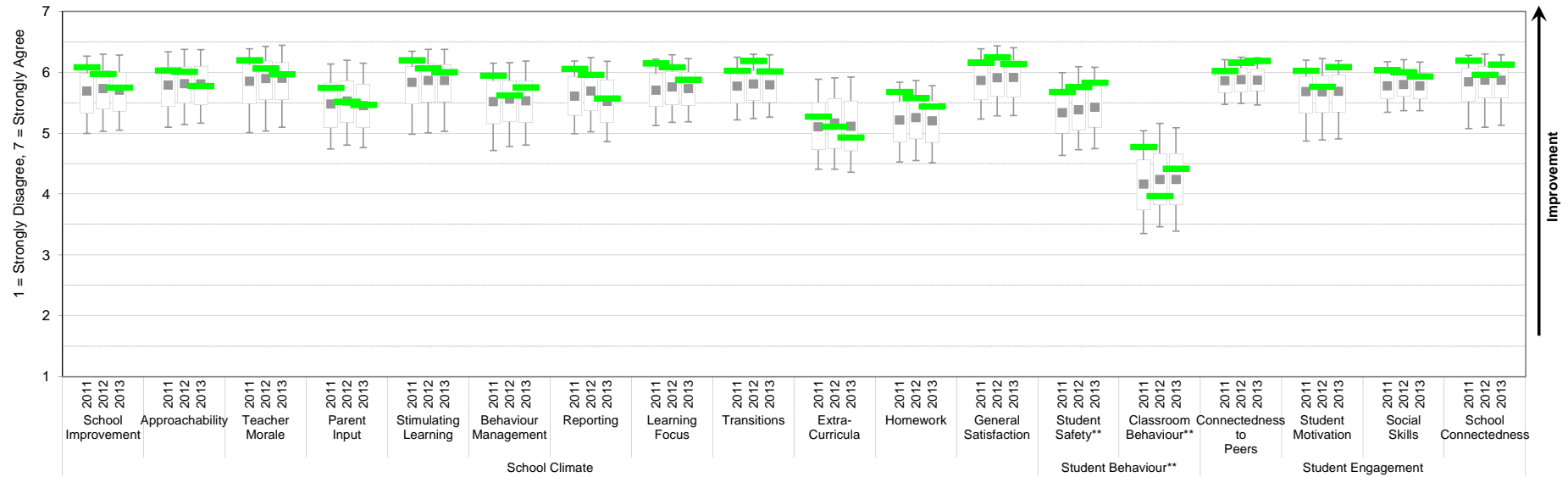


	Recommended sample size	Number of questionnaires sent*	Number of questionnaires returned	Response rate
2011	64	70	56	80%
2012	67	74	52	70%
2013	71	78	51	65%

Legend:



School means plotted against distribution of state-wide school means



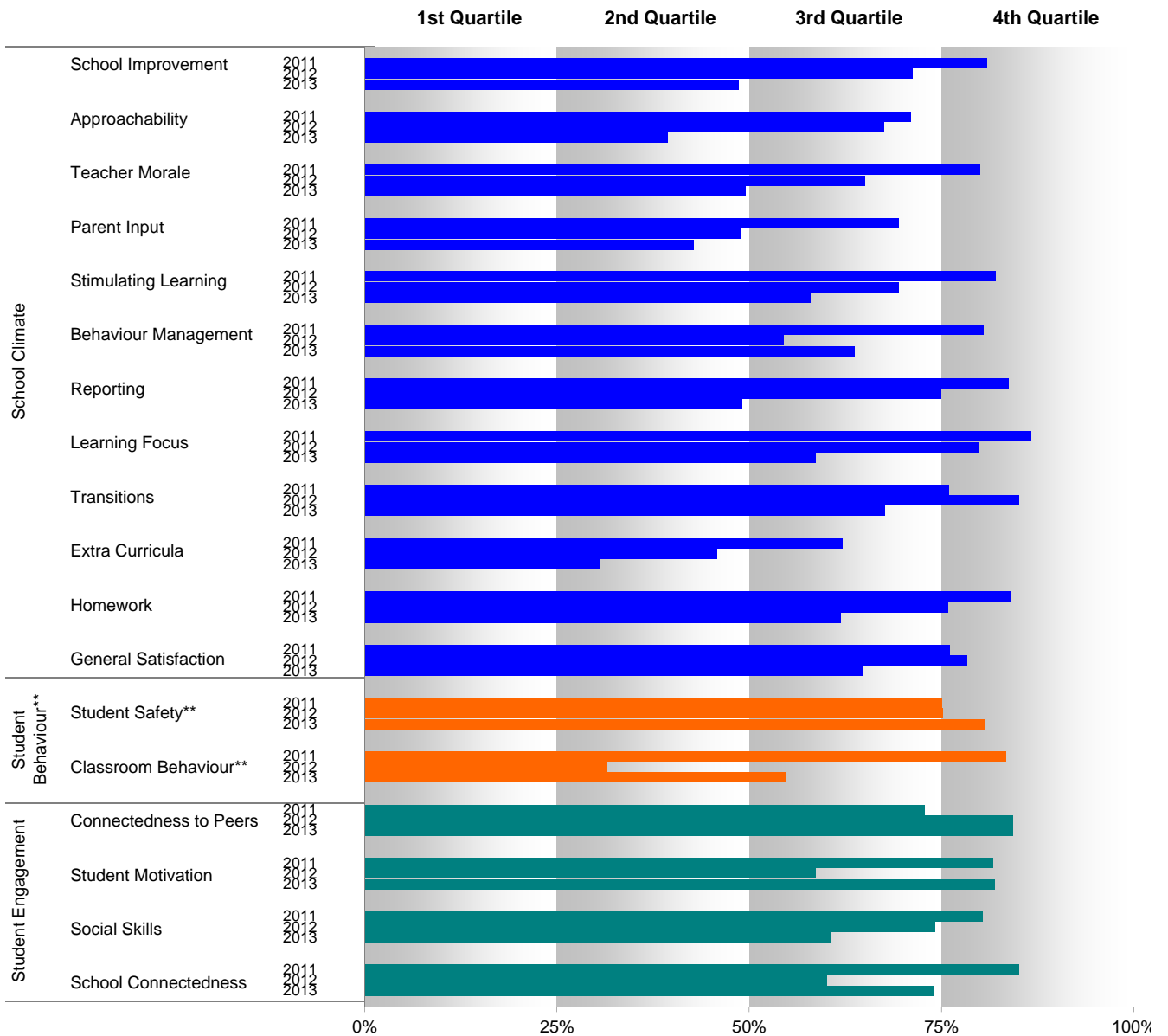
\* The "Number of questionnaires sent" is taken from the tally sheet returned with each school's questionnaires. If the tally sheet was not completed, the number is not available.

\*\* Parents' responses to all negatively phrased questions have been reversed for reporting purposes. Across all variables, the higher the score or percentile rank, the more positive parents' perceptions.

School Number: 5160

School Name: Mill Park Primary School

School means plotted as percentage ranks against state-wide school means



\*\* Parents' responses to all negatively phrased questions have been reversed for reporting purposes. Across all variables, the higher the score or percentile rank, the more positive parents' perceptions.

**2013 Parent Opinion Survey (Response Frequency Distribution)**

School Number: 5160

School Name: Mill Park Primary School

	Number of Responses	School Mean	Response Frequency - Percentage (Number)							Number
			Strongly Disagree (1)	Moderately Disagree (2)	Mildly Disagree (3)	Neither Agree nor Disagree (4)	Mildly Agree (5)	Moderately Agree (6)	Strongly Agree (7)	
<b>School Improvement</b>			<b>5.75</b>							
30 This school always aims to improve the quality of education it provides.	51	5.88	0 (0)	2 (1)	2 (1)	4 (2)	29 (15)	24 (12)	39 (20)	0
33 This school has a clear understanding of its strengths and weaknesses.	51	5.41	0 (0)	0 (0)	6 (3)	25 (13)	14 (7)	31 (16)	24 (12)	0
44 This school always strives to improve.	51	5.96	0 (0)	2 (1)	0 (0)	6 (3)	22 (11)	33 (17)	37 (19)	0
<b>Approachability</b>			<b>5.78</b>							
27 There is good two-way communication between the staff and parents at my child's school.	50	5.44	6 (3)	2 (1)	6 (3)	6 (3)	22 (11)	24 (12)	34 (17)	1
39 I feel comfortable about approaching this school with any concerns I might have.	51	5.94	2 (1)	0 (0)	6 (3)	6 (3)	10 (5)	33 (17)	43 (22)	0
40 My child's teacher/s understand my point of view.	51	6.00	0 (0)	2 (1)	2 (1)	4 (2)	14 (7)	43 (22)	35 (18)	0
51 This school takes parents concerns seriously.	51	5.73	0 (0)	0 (0)	8 (4)	10 (5)	18 (9)	31 (16)	33 (17)	0
<b>Teacher Morale</b>			<b>5.97</b>							
25 The teachers at my child's school are extremely dedicated.	49	6.04	0 (0)	2 (1)	2 (1)	6 (3)	16 (8)	27 (13)	47 (23)	2
28 The teachers at my child's school are very enthusiastic.	50	5.88	0 (0)	2 (1)	4 (2)	4 (2)	18 (9)	38 (19)	34 (17)	1
32 The teachers at my child's school are very passionate about teaching.	51	6.02	0 (0)	0 (0)	4 (2)	8 (4)	14 (7)	31 (16)	43 (22)	0
35 The teachers at my child's school have a lot of pride in their work.	50	6.08	0 (0)	0 (0)	4 (2)	8 (4)	12 (6)	28 (14)	48 (24)	1
41 The teachers at my child's school are very energised.	50	5.84	0 (0)	2 (1)	2 (1)	10 (5)	18 (9)	32 (16)	36 (18)	1
<b>Parent Input</b>			<b>5.47</b>							
37 This school encourages parents to have a say in planning for the future.	51	5.47	2 (1)	2 (1)	6 (3)	14 (7)	18 (9)	31 (16)	27 (14)	0
45 This school encourages parents to have a say when planning new policies.	51	5.43	2 (1)	2 (1)	4 (2)	20 (10)	16 (8)	29 (15)	27 (14)	0
48 I have an opportunity to get involved in planning and deciding things at this school if I want to.	50	5.50	2 (1)	0 (0)	4 (2)	18 (9)	18 (9)	32 (16)	26 (13)	1
<b>Stimulating Learning</b>			<b>6.00</b>							
24 The teachers at my child's school are very good at making learning fun.	50	6.00	0 (0)	0 (0)	2 (1)	4 (2)	26 (13)	28 (14)	40 (20)	1
31 The teachers at my child's school are very good at encouraging my child to learn.	51	6.10	0 (0)	2 (1)	0 (0)	6 (3)	16 (8)	31 (16)	45 (23)	0
36 Teachers at this school motivate my child to want to learn.	51	5.94	0 (0)	2 (1)	2 (1)	10 (5)	18 (9)	24 (12)	45 (23)	0
42 This school encourages my child to persist with their learning when it is difficult.	50	5.98	0 (0)	2 (1)	0 (0)	8 (4)	20 (10)	28 (14)	42 (21)	1
<b>Behaviour Management</b>			<b>5.76</b>							
34 The teachers at my child's school manage student behaviour fairly.	51	5.76	0 (0)	2 (1)	6 (3)	6 (3)	18 (9)	37 (19)	31 (16)	0
43 The teachers at my child's school manage student behaviour in a consistent way.	51	5.73	0 (0)	2 (1)	4 (2)	10 (5)	18 (9)	37 (19)	29 (15)	0
47 The teachers at my child's school manage student behaviour sensibly.	51	5.78	0 (0)	2 (1)	4 (2)	12 (6)	10 (5)	41 (21)	31 (16)	0



**2013 Parent Opinion Survey (Response Frequency Distribution)**

School Number: 5160

School Name: Mill Park Primary School

	Number of Responses	School Mean	Response Frequency - Percentage (Number)							Number
			Strongly Disagree (1)	Moderately Disagree (2)	Mildly Disagree (3)	Neither Agree nor Disagree (4)	Mildly Agree (5)	Moderately Agree (6)	Strongly Agree (7)	
<b>Reporting</b>			<b>5.58</b>							
38 My child's school report is very helpful.	51	5.49	2 (1)	4 (2)	4 (2)	10 (5)	25 (13)	24 (12)	31 (16)	0
46 My child's report gives me a good understanding of how my child is progressing at school.	51	5.65	2 (1)	0 (0)	8 (4)	8 (4)	18 (9)	33 (17)	31 (16)	0
49 My child's reports cover all the areas of their progress that I need to know about.	51	5.59	2 (1)	2 (1)	4 (2)	6 (3)	27 (14)	31 (16)	27 (14)	0
<b>Learning Focus</b>			<b>5.88</b>							
6 The academic standards at this school provide adequate challenge for my child.	50	5.76	2 (1)	2 (1)	2 (1)	6 (3)	22 (11)	32 (16)	34 (17)	1
8 The education programs at this school are suitable for my child.	51	5.96	0 (0)	2 (1)	4 (2)	2 (1)	12 (6)	49 (25)	31 (16)	0
11 This school is meeting the academic needs of my child.	50	5.84	2 (1)	2 (1)	2 (1)	2 (1)	22 (11)	36 (18)	34 (17)	1
17 The subjects taught at this school meet the needs of my child.	51	5.96	0 (0)	2 (1)	0 (0)	4 (2)	22 (11)	39 (20)	33 (17)	0
<b>Transitions</b>			<b>6.02</b>							
52 My child is well prepared for the next stage in their education.	50	5.84	0 (0)	0 (0)	2 (1)	20 (10)	10 (5)	28 (14)	40 (20)	1
53 My child was supported well when they started back at school this year.	50	6.00	2 (1)	2 (1)	0 (0)	10 (5)	10 (5)	28 (14)	48 (24)	1
54 Before the end of last year, my child was well prepared for this year at school.	50	6.10	0 (0)	0 (0)	2 (1)	10 (5)	16 (8)	20 (10)	52 (26)	1
55 My child has been supported in their transitions at school.	51	6.14	0 (0)	2 (1)	2 (1)	6 (3)	10 (5)	31 (16)	49 (25)	0
<b>Extra-Curricula</b>			<b>4.93</b>							
14 My child's school has good extra-curricular activities.	51	4.82	2 (1)	2 (1)	12 (6)	27 (14)	25 (13)	16 (8)	16 (8)	0
20 This school provides an appropriate range of extra-curricular activities.	51	5.04	0 (0)	2 (1)	12 (6)	24 (12)	22 (11)	25 (13)	16 (8)	0
<b>Homework</b>			<b>5.44</b>							
9 My child is taught organisational skills to help them do their homework.	51	5.16	0 (0)	2 (1)	10 (5)	24 (12)	18 (9)	29 (15)	18 (9)	0
16 My child's homework helps them with their learning.	51	5.73	0 (0)	0 (0)	6 (3)	12 (6)	18 (9)	33 (17)	31 (16)	0
<b>General Satisfaction</b>			<b>6.14</b>							
23 Overall, I am satisfied with the education my child receives from their school.	51	6.14	0 (0)	0 (0)	0 (0)	8 (4)	12 (6)	39 (20)	41 (21)	0
<b>Student Safety**</b>			<b>5.83</b>							
13 My child has been bullied recently at school.**	49	5.86	2 (1)	10 (5)	4 (2)	2 (1)	2 (1)	24 (12)	55 (27)	2
19 Other students are mean to my child.**	49	6.00	0 (0)	0 (0)	12 (6)	4 (2)	6 (3)	27 (13)	51 (25)	2
22 My child has been teased recently at school.**	50	5.64	2 (1)	14 (7)	4 (2)	2 (1)	6 (3)	20 (10)	52 (26)	1

**2013 Parent Opinion Survey (Response Frequency Distribution)**

School Number: 5160

School Name: Mill Park Primary School

	Number of Responses	School Mean	Response Frequency - Percentage (Number)							Number
			Strongly Disagree (1)	Moderately Disagree (2)	Mildly Disagree (3)	Neither Agree nor Disagree (4)	Mildly Agree (5)	Moderately Agree (6)	Strongly Agree (7)	
<b>Classroom Behaviour**</b>			<b>4.42</b>							
26 Some students are disruptive in class making it hard for my child to learn.**	49	4.29	6 (3)	4 (2)	33 (16)	16 (8)	6 (3)	22 (11)	12 (6)	2
29 The behaviour of other students interrupts my child's learning.**	49	4.55	2 (1)	10 (5)	27 (13)	14 (7)	6 (3)	20 (10)	20 (10)	2
<b>Connectedness to Peers</b>			<b>6.19</b>							
2 My child gets on well with their peers at school.	51	6.27	0 (0)	0 (0)	0 (0)	4 (2)	16 (8)	29 (15)	51 (26)	0
5 My child feels accepted by other students at school.	50	6.04	0 (0)	0 (0)	0 (0)	10 (5)	8 (4)	50 (25)	32 (16)	1
10 My child gets on well with other students at school.	51	6.25	0 (0)	0 (0)	0 (0)	2 (1)	18 (9)	33 (17)	47 (24)	0
<b>Student Motivation</b>			<b>6.09</b>							
12 My child looks forward to going to school.	51	6.18	0 (0)	0 (0)	2 (1)	10 (5)	8 (4)	29 (15)	51 (26)	0
15 My child always wants to go to school.	51	6.00	0 (0)	0 (0)	2 (1)	12 (6)	16 (8)	25 (13)	45 (23)	0
<b>Social Skills</b>			<b>5.93</b>							
3 My child is mastering a range of social skills.	50	5.80	0 (0)	0 (0)	2 (1)	10 (5)	22 (11)	38 (19)	28 (14)	1
7 My child is developing good social skills.	50	6.06	0 (0)	0 (0)	0 (0)	8 (4)	16 (8)	38 (19)	38 (19)	1
21 My child is developing valuable social skills.	51	5.94	0 (0)	0 (0)	2 (1)	4 (2)	25 (13)	35 (18)	33 (17)	0
<b>School Connectedness</b>			<b>6.13</b>							
1 My child looks forward to the learning they do at school.	50	6.16	0 (0)	0 (0)	2 (1)	4 (2)	18 (9)	28 (14)	48 (24)	1
18 My child enjoys the learning they do at school.	50	6.10	0 (0)	0 (0)	0 (0)	6 (3)	20 (10)	32 (16)	42 (21)	1

\*\* Parents' responses to all negatively phrased questions have been reversed for reporting purposes. Across all variables, the higher the score or percentile rank, the more positive parents' perceptions.